

# Prous Science Daily Essentials

## FILE DESCRIPTION

**Prous Science Daily Essentials™**, produced by Prous Science Publishers, is a clear, concise and flexible database that provides up-to-date drug R&D information. More than 25 late-breaking news items including information from ongoing congresses and conferences are posted in the current file (File 458) each business day. It offers users practical and accurate information including chemical structures, data tables and other images for day-to-day decisions in drug R&D and marketing. A searchable archive (File 459) gives access to more than 25,000 news items dating back to early 1996. These files are a valuable source of up-to-date information for professionals in research, development, management, marketing, licensing, and new business development within the pharmaceutical industry and for all those interested in this industry's activities.

## SUBJECT COVERAGE

Prous Science Daily Essentials database provides the following information:

- Title
- Drug Name
- Company Name
- Therapeutic Classification
- Patent Numbers (where available)
- Development Status
- Text

## SOURCES

Principal sources for the news items published in Prous Science Daily Essentials are the current biomedical literature, patent literature, congresses, company communications, and Internet monitoring. The most recent patent literature is from 11 different sources, reflecting research activity throughout the world. The database includes the information from 1,500 journals, 300 congresses and meetings, company communications and Internet Monitoring. The information describes the activity of more than 2,500 companies, research institutes and universities.

## TIPS

### USE FILES 458 AND 459

to keep up-to-date on new developments in drug R&D throughout the world.

### USE /NA, NA= or /SY, SY=

to search for a drug name:

S ERYLOSIDE/NA

### USE the S operator

to ensure the terms appear in the same paragraph:

S THROMBIN(S)AGGREGATION?/TX

### USE MAP NA or SY

to save associated drug names for further searching:

MAP NA TEMP S1

### USE FORMAT 19

to display full record with image.

## DIALOG FILE DATA

Inclusive Dates: Last four weeks (File 458)  
March 1996 to the last month (File 459)

Update Frequency:

Daily (Approximately 25 records per update) (File 458)

Weekly (File 459)

File Size:

Approximately 400 records as of June 2000 (File 458)

Over 27,140 records as of June 2000 (File 459)

## CONTACT

Prous Science Daily Essentials is provided by Prous Science Publishers. Questions concerning the file content should be directed to:

Prous Science, S.A.

P.O. Box 540

Barcelona 08080

Spain

Phone: +34 93 459-2220

Fax: +34 93 458-1535

E-Mail: [service@prous.com](mailto:service@prous.com)

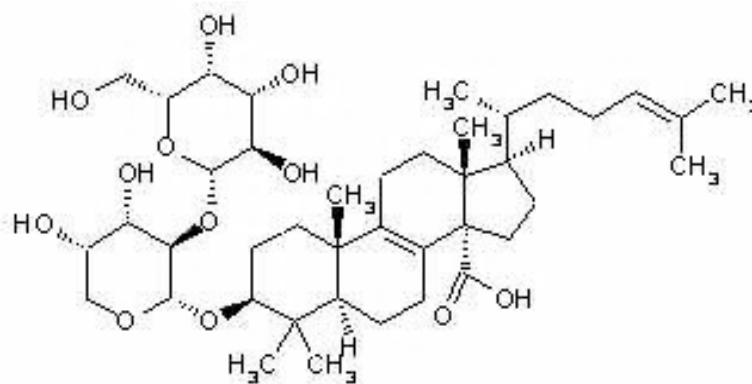
DIALOG(R)File 458:Daily Essentials  
(c) 2000 Prouse Science. All rts. reserv.

00032686

/TI ERYLOSIN F: A NEW THROMBIN RECEPTOR ANTAGONIST PRODUCED BY A MARINE SPONGE  
JN= Daily Essentials  
PD=,PY= May 17, 2000 (20000517)  
DT= DOCUMENT TYPE: Current Literature  
/ST,ST= DEVELOPMENT STATUS: New Compound  
LA= LANGUAGE: English  
RT= RECORD TYPE: Fulltext; Image

/TX A novel penasterol disaccharide designated eryloside F has been discovered during a screening for thrombin receptor antagonists at Glaxo Wellcome and the Harbor Branch Oceanographic Institution. Isolated from an extract of the marine sponge Erylus formosus, the compound is closely related to formoside and acts as a potent and relatively selective thrombin receptor antagonist and antiplatelet agent, as demonstrated by IC50 values for inhibition of SFLLRN (thrombin receptor-activating peptide)- and U-46619-induced human platelet aggregation of 0.3 mcg/ml and 1.7 mcg/ml, respectively. It is also reported to possess low toxicity in HepG2 cells (Stead, P. et al. Bioorg Med Chem Lett 2000, 10(7): 661).

/CO,CO= NAMED COMPANIES: Glaxo Wellcome; Harbor Branch Oceanographic Institution  
/NA,NA=,SY,SY=,AA= NAMED DRUGS: Eryloside F [288492]



/TC,TC= THERAPEUTIC CLASS: Blood Coagulation, Agents Affecting; Antiplatelet Therapy

SEARCH OPTIONS

BASIC INDEX

SEARCH SUFFIX	DISPLAY CODE	FIELD NAME	INDEXING	SELECT EXAMPLES
—	—	All Basic Index Fields	Word	S LOW(W)TOXICITY
/CO	CO	Company Name <sup>1</sup>	Word	S GLAXO(W)WELCOME/CO
/NA	NA	Drug Name <sup>1</sup>	Word	S ERYLOSIDE(W)F/NA
/ST	ST	Development Status <sup>1</sup>	Word	S NEW(W)COMPOUND/ST
/SY	SY	Drug Name <sup>1</sup>	Word	S ERYLOSIDE(W)F/SY
/TC	TC	Therapeutic Class Text <sup>1,2</sup>	Word & Phrase	S BLOOD(W)COAGULATION/TC
/TI	TI	Title	Word	S ANTIPLATELET THERAPY/TC
/TX	TX	Text	Word	S THROMBIN(W)RECEPTOR/TI S THROMBIN(S)AGENT/TX

<sup>1</sup> Searchable in the Basic Index and in the Additional Indexes.

<sup>2</sup> Also searchable using /DE, /DF.

ADDITIONAL INDEXES

SEARCH PREFIX	DISPLAY CODE	FIELD NAME	INDEXING	SELECT EXAMPLES
AA=	AA	Prous Entry Number <sup>3</sup>	Phrase	S AA=288492
—	AZ	DIALOG Accession Number		
CO=	CO	Company Name <sup>1</sup>	Phrase	S CO=HARBOR BRANCH?
DT=	DT	Document Type	Phrase	S DT=CURRENT LITERATURE
—	IM	Image		
JN=	JN	Journal Name	Phrase	S JN=DAILY ESSENTIALS
LA=	LA	Language <sup>4</sup>	Phrase	S LA=ENGLISH
NA=	NA	Drug Name <sup>1</sup>	Phrase	S NA=ERYLOSIDE F
PD=	PD	Publication Date	Phrase	S PD=20000517
PN=	PN	Patent Number	Phrase	S PN=US 6051582
PY=	PY	Publication Year	Phrase	S PY=2000
RT=	RT	Record Type <sup>5</sup>	Phrase	S RT=FULLTEXT
ST=	ST	Development Status <sup>1</sup>	Phrase	S ST=NEW COMPOUND
SY=	SY	Drug Name <sup>1</sup>	Phrase	S SY=ERYLOSIDE F
TC=	TC	Therapeutic Class Text <sup>1,2</sup>	Phrase	S TC=BLOOD COAGULATION
UC=	—	Update Code - Changed Records	Phrase	S UC=9999
UD=	—	Update	Phrase	S UD=9999

<sup>3</sup> This field will appear in a record only if a drug name is present in the record. This number is not unique as record may discuss multiple drugs each with their own AA.

<sup>5</sup> All records are full-text.

<sup>4</sup> All records are in English.

**Files 458, 459**  
**SPECIAL FEATURES**

**Prous Science Daily Essentials**

For command descriptions, enter HELP LIMIT, HELP SORT, HELP RANK, HELP MAP online.

<b>LIMIT</b>	/ENG -- English-Language Articles <sup>4</sup> /FULLTEXT -- Full-Text Records <sup>5</sup> /IMAGE -- Image /LONG -- Word Count of 1,000 Words or More /SHORT -- Word Count of Less than 1,000 Words /YYYY -- Publication Year	S S3/ENG S S2/FULLTEXT S S1/IMAGE S S4/LONG S S5/SHORT S S6/2000
<b>SORT</b>	CO, NA, PD, PY, SY, TI	SORT S2/ALL/TI SORT S1/ALL/NA/D SORT S3/ALL/PY/D
<b>RANK</b>	All phrase- and numeric-indexed fields in the Additional Indexes can be ranked. Other RANK codes include: TC	RANK TC S2 RANK NA S3 RANK SY S1
<b>MAP</b>	AA, CO, NA, SY	MAP CO TEMP S2 MAP NA TEMP S3

**PREDEFINED FORMAT OPTIONS**

NO.	DIALOGWEB FORMAT	RECORD CONTENT
1	--	DIALOG Accession Number
2	Medium	Bibliographic Citation
3	Short	Title and Drug Name
4	--	Full Record with Tagged Fields
5	--	Full Record
6	Free	Title, Publication Date, and Publication Year
7	--	Bibliographic Citation and Text
8	--	Title, Indexing, Publication Date and Publication Year
9	Long	Full Record
19	Full	Full Record plus Image
K	--	KWIC (Key Word In Context) displays a window of text; may be used alone or with other formats

**OTHER OUTPUT OPTIONS**

For an explanation, enter HELP TYPE, HELP UDF, HELP TAG online.

<b>USER DEFINED FORMATS</b>	Display codes listed in the Search Options tables can be used to customize output	TYPE S4/TI, TX/1-5 PRINT S5/CO, PN/ALL DISPLAY S3/NA, TC/2-3
<b>TAG</b>	Output can be displayed with tags identifying each display field	TYPE S4/9/ALL TAG
<b>DIRECT RECORD ACCESS</b>	If the accession number of a specific record is known, it can be used to display the record directly.	TYPE 00085603/9 PRINT 00095905/9 DISPLAY 00095905/9

**FOR ONLINE HELP:**

See HELP FIELDS 458 for searchable fields; HELP FORMAT 458 for output formats; HELP LIMIT 458 for limits; HELP RATES 458 for cost information; HELP SORT 458 for sorts.