

IMS R&D Focus

FILE DESCRIPTION

IMS R&D Focus is a powerful tool to evaluate the progress of R&D pipelines from Discovery phase to Marketed phase. With more than 23,300 drugs in R&D, 9,400 drugs in active development, and 4,800 biotechnology products, the file provides the latest scientific and commercial developments in international pharmaceutical research and development. All aspects of a drug's development are presented in a convenient "all in one" record format. More than 3,000 companies are profiled with respect to their involvement in the development of a drug as well as their relationships as licensor and licensee. Full commercial summaries provide a commercial overview, regulatory progress, licensing and partnering deals, and analysts' sales predictions.

The file corresponds to the electronic publication *R&D Focus* (Drug Profile records) and incorporates *R&D Focus Drug News*, the weekly news service that reports on more than 23,000 drugs compiled by editors via interviews at scientific and investor conferences worldwide. These records cover new drugs in research, changes in development phases, and licensing opportunities. File 445 is publicly available; File 955 is available only to subscribers of *R&D Focus* and *R&D Drug News*. Images of chemical structures are available for more than 6,000 Drug Profile records.

SUBJECT COVERAGE

IMS R&D Focus provides comprehensive reviews and up-to-date news on drugs in development including full synonyms, licensing status, patent summary, development history, commercial potential, scientific and commercial summaries, and abstracts of significant scientific papers. Scientific summaries detail pre-clinical and clinical data and sales profiles of 123 leading therapeutic classes using IMS sales data. Some financial background of the disease area is provided when available.

SOURCES

IMS R&D Focus is compiled from a comprehensive range of sources. Primary resources include information provided directly from companies involved in research and development, interviews with key executives, and official press releases. Additional information is gathered from IMS Health staff attendance at international medical and clinical symposia, research conferences and meetings; scanning of scientific proceedings; and medical and patent literature. Information is checked and validated prior to inclusion into *R&D Focus*.

TIPS

SEARCH FILE 445

for the latest cutting edge information on drug development.

USE DialogLink 5™ and FILE 445

to graphically search and display the chemical structures in the file.

S CO=GILEAD SCIENCE?/PROFILE AND
RT=IMAGE

Search drugs by development phase

to review registered and recently marketed products

S TN=GARDASIL AND
DP=MARKETED/2006

DIALOG FILE DATA

Inclusive Dates:

1991 to the present, covering drugs in development since 1977

Update Frequency: Weekly

File Size:

More than 84,200 records as of October 2006

CONTACT

IMS R&D Focus is produced by IMS Health. Questions concerning file content should be addressed to:

IMS Health
Customer Services Dept., Global Services
7 Harewood Avenue
London NW1 6JB
England

Phone: +44 0207-393-5888

Fax: +44 0207-393-5346

E-Mail: service@imshealth.com

DRUG PROFILE SAMPLE RECORD

DIALOG(R)File 445: IMS R&D Focus
(c) 2007 IMS Health & Affiliates. All rts. reserv.

02002151 ** Image available **

/NA,NA=

Drug Name: lansoprazole

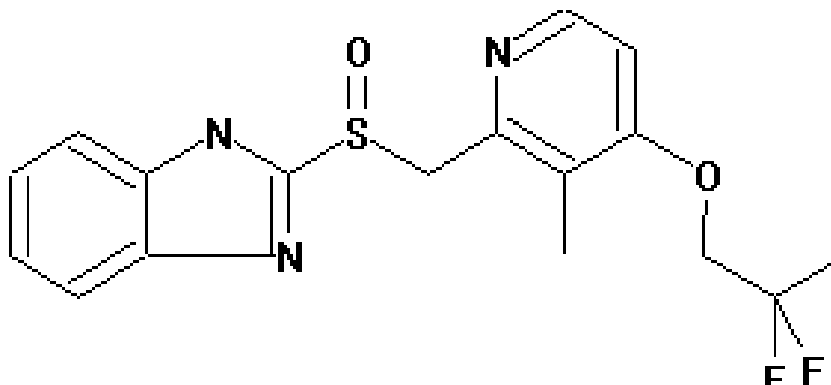
/TN,TN=

Brand Name: TAKEPRON ; OGAST; LANZOR; AGOPTON; PREVACID; LANZO; OPIREN;
BAMALITE; ZOTON; OGASTRO

JN=,PD=,PY=

R&D Focus - July 08, 2002 (20020708) 2002

Image



IM displays the graphic structure when DialogLink 5 is used.

COMPANY INFORMATION:

/CO,CO=

Originator:

Takeda; (Japan); NA; licensor; France, Japan,
Germany, Indonesia, Taiwan

/LO,LO=

Licensee/Licensor:

Abbott; (USA); NA; licensee; Peru, Venezuela,
Argentina, Brazil, Central America, Colombia,
Mexico

/LI,LI=,RL=

RG=

CC=

Almirall Prodesfarma; (Spain); NA; licensee;
Spain

IP=

Argentia; (Argentina); Bristol-Myers Squibb;
licensee; Argentina

Aventis; (France); NA; licensee; France,
Netherlands, Belgium, Africa, Middle East
Boehringer Ingelheim; (Germany); NA; licensee;
Latin America

GlaxoSmithKline; (UK); NA; licensee; UK
(. . .)

/PA,PA=

Patent Assignee:

Takeda

DRUG INFORMATION:

RN=

CAS Registry Number:

103577-45-3, lansoprazole; 138530-94-6, (R)/(+)
; 138530-95-7, (S)/(-); 154727-72-7, replaced
by 103577-45-3

CD=

Laboratory Code:

AG 1749; CG 4801; A 65006

/AC,AC=

Pharmacological Action:

proton pump inhibitor; imidazole

/TC,TC=

Therapeutic Class Code:

A2B2 (Antiulcerants, Acid Pump Inhibitors); J1X
(Other Antibiotics)

/IN

Clinical Indications:

gastrointestinal ulcer; bacterial infection

CN=

Chemical Name:

2-[[[3-methyl-4-(2,2,2-trifluoroethoxy)-2-pyrid
inyl]methyl]sulfinyl]-1H-benzimidazole

NC=

Nomenclature:

INN

MC=

Molecular Code:

3982200000

LATEST INFORMATION:

/TX

29 January 2001: Takeda's lansoprazole (TAKEPRON), a proton pump inhibitor, has been approved in Japan for maintenance therapy of patients with recurrent reflux esophagitis.

CURRENT DEVELOPMENT STATUS:

DP=,SN=

Highest Phase:

Marketed (80)

Development Phase/

Country/Indication:

Marketed, Worldwide, gastrointestinal ulcer
Marketed, USA, bacterial infection

DRUG PROFILE SAMPLE RECORD (cont'd)

Marketed, UK, bacterial infection
 Marketed, Italy, bacterial infection
 Marketed, France, bacterial infection
 Marketed, Germany, bacterial infection
 Registered, Japan, bacterial infection

DEVELOPMENT HISTORY:

/TX MAR 2002: American Home Products changes name to Wyeth.
 DEC 2000: Registered, Japan (reflux esophagitis).
 OCT 2000: Marketed, USA;UK;Italy;France;Germany (bacterial infection).
 Pre-registration, Japan (bacterial infection).
 DEC 1999: Hoechst Marion Roussel and Rhone-Poulenc Rorer merge to form Aventis.
 JUL 1995: Marketed, USA.
 MAY 1995: Registered, USA.
 FEB 1995: Approvable, USA.
 1994: Marketed, Argentina, Brazil, Central America, Chile, Colombia, Denmark, Egypt, Indonesia, Mexico, Pakistan, Peru, Spain, Taiwan, Venezuela.
 DEC 1994: Approval recommended, USA.
 (. . .)
 JUN 1986: Preclinical, Japan.
 1984: Priority product patent application filed, Japan.

COMMERCIAL SUMMARY:

/TX Lansoprazole is a substituted benzimidazole proton pump inhibitor with potent and long-lasting antisecretory activity developed by Takeda. Lansoprazole was launched by Hoechst Marion Roussel (now Aventis) in France, its first world market, in December 1991. It has since been (. . .)

SCIENTIFIC SUMMARY:

/TX The antisecretory activity of lansoprazole has been demonstrated in isolated parietal cells and in dogs and rats. Growth inhibition of the urogenital pathogen Ureaplasma urealyticum by lansoprazole has been (. . .)

PATENT SUMMARY:

/TX Product: EP 174726 B 1989, priority JP 171069 1984, designating 11 states. Equivalents identified in 22 countries. Composition: EP 382489 B 1994, priority JP 32374 1989, designating 14 states. Equivalents identified in five countries.

DRUG NEWS SAMPLE RECORD

DIALOG(R)File 445:IMS R&D Focus
 (c) IMS. 03/04/03. All rts. reserv.

00011230

/TI Mismatched double stranded RNA Helix BioPharma, HemispheRx emergency drug release program for AMPLIGEN
 JN=,PD=,PY= R&D Focus Drug News - May 20, 1996 (May 20, 1996)

/TX TEXT:
 The Canadian Health Protection Branch has authorized the distribution of AMPLIGEN under an emergency drug release program for the treatment of chronic fatigue syndrome. Distribution will be carried out by Helix BioPharma, the product's Canadian licensee. The developer of AMPLIGEN, HemispheRx, entered an agreement for the joint development of the product in Canada with Helix BioPharma in April 1996. HemispheRx has published preliminary clinical studies that suggest that AMPLIGEN may be beneficial in a subset of patients with chronic fatigue syndrome. AMPLIGEN is a mismatched double stranded RNA product.

/NA,NA=,/DE Descriptors: mismatched double stranded RNA, poly(I)poly(C(sub12)U),
 AMPLIGEN; L1X (Other Cytostatics), R6A (Systemic
 /TC,TC=,/DE Antihistamines), J5B (Antivirals, Excluding Anti-HIV
 Products), B2O (Other Blood Clotting Agents); HemispheRx; ;
 ; ;
 /CO,CO=,/DE mismatched double stranded RNA, poly(I)poly(C(sub12)U),
 AMPLIGEN; L1X (Other Cytostatics), R6A (Systemic
 Antihistamines), J5B (Antivirals, Excluding Anti-HIV
 Products), B2O (Other Blood Clotting Agents); Helix
 BioPharma; ; ; ;

BASIC INDEX

SEARCH SUFFIX	DISPLAY CODE	FIELD NAME	INDEXING	SELECT EXAMPLES
—	—	All Basic Index Fields	Word	S INTERLEUKIN
/AB	AB	Abstract	Word	S DUODENAL(W)ULCER?/AB
/AC	AC	Pharmacological Action	Word	S PROTON(W)PUMP?/AC
/CO	CO	Company Name ^{1,2,11}	Word	S ALMIRAL(W)PRODESFARMA/CO
/DE	DE	Descriptor ^{3,4}	Word	S DOUBLE(W)STRANDED(W)DNA/DE
/IN	IN	Clinical Indication	Word	S BACTERIAL(W)INFECTION/IN
/LI	LI	Licensee/Licensors ^{2,5,6}	Word	S ALMIRALL/LI
/LO	LO	Licensors/Originator ^{2,7}	Word	S TAKEDA/LO
/NA	NA	Drug Name ^{2,8,11}	Word & Phrase	S LANSOPRAZOLE/NA S INTERLEUKIN-12/NA
/PA	PA	Patent Assignee ²	Word	S TAKEDA/PA
/ST	ST	Status, Country, and Indication ²	Word	S MARKETED(S)FRANCE/ST
/TC	TC	Therapeutic Class Code and Description ²	Word	S A2B2/TC S ANTIULCERANTS/TC
/TI	TI	Title ⁴	Word	S (FDA AND AMPLIGEN)/TI
/TN	NA	Brand Name ²	Word & Phrase	S TAKEPRON/TN S SPIRO-32/TN
/TX	CS	Commercial Summary	Word	S ANTISECRETORY(W)ACTIVITY/TX
/TX	LA	Latest Information	Word	S LICENSING(W)AGREEMENT?/TX
/TX	PS	Patent Summary	Word	S EP(W)174726/TX
/TX	SS	Scientific Summary	Word	S ISOLATED(W)PARIETAL(W)CELLS/TX
/TX	TX	Text	Word	S MYALGIC(W)ENCEPHALOMYELITIS/TX
/TX	UP	Development History	Word	S SEP(W)1992(S)ALMIRALL/TX

¹ Includes Company Name of Licensors/Originator, Licensee/Licensors, and Patent Assignee.

² Searchable in the Basic Index and in the Additional Indexes.

³ Includes Drug Name, Therapeutic Class Code and Description, Company Name, Event Code, New Drug, and New Phase Indicator.

⁴ Available in R&D Focus Drug News records only.

⁵ Display includes Licensee/Licensors, Licensee/Licensors Country, Parent Company of Licensee/Licensors, Company Relationship, and Region of Originator.

⁶ Includes Originator.

⁷ Includes Company Name of Originator, Originator Country, Parent Company of Originator, Company Relationship, and Region of Originator.

⁸ Includes Drug Name, Brand Name, and Laboratory Code.

⁹ Special suffixes are used to further restrict the appropriate prefixed fields as noted: /LI (Licensee), /LO (Licensors).

¹⁰ Available in Drug Profile records only.

¹¹ SORTs for CO and NA work only in Drug Profile records.

ADDITIONAL INDEXES

SEARCH PREFIX	DISPLAY CODE	FIELD NAME	INDEXING	SELECT EXAMPLES
AC=	AC	Pharmacological Action	Word & Phrase	S AC=(PROTON(W)PUMP) S AC=PROTON PUMP INHIBITOR
—	AZ	DIALOG Accession Number		
CC=	CI	Licensee/Licensors Country ^{9,10}	Phrase	S CC=GERMANY/LI
CC=	CI	Originator Country ⁹	Phrase	S CC=JAPAN/LO
CD=	CD	Laboratory Code	Phrase	S CD=AG 1749
CL=	CL	Country Available for Licensing	Phrase	S CL=WORLDWIDE
CN=	CN	Chemical Name	Phrase	S CN=ACETYL-L-CARNITINE
CO=	CO	Company Name ^{1,2,11}	Phrase	S CO=ALMIRAL PRODESFARMA
—	CT	Licensing Contact Address		
DP=	DP	Highest Development Phase	Phrase	S DP=MARKETED
EC=	EC	Event Code ^{4,13}	Phrase	S EC=LICENSING AGREEMENT
—	IM	Image ¹⁴		
IP=	IL	Parent Company of Licensee/Licensors ⁹	Phrase	S IP=BRISTOL-MYERS SQUIBB/LI
IP=	IP	Parent Company of Originator ³	Phrase	S IP=AKZO NOBEL/LO
JN=	JN	Journal Name	Phrase	S JN=R&D FOCUS DRUG NEWS S JN=R&D FOCUS
LC=	LC	Estimated Launch Country	Phrase	S LC=USA
LD=	LD	Estimated Launch Date	Phrase	S LD=20011231
LI=	LI	Licensee/Licensors ^{2,5,6}	Phrase	S LI=WYETH
LO=	LO	Licensors/Originator ^{2,7}	Phrase	S LO=TAKEDA
MC=	MC	Molecular Code ¹²	Phrase	S MC=398220000
NA=	NA	Drug Name ^{2,8,11}	Phrase	S NA=LANSOPRAZOLE
NC=	NC	Nomenclature	Phrase	S NC=INN
ND=	ND	New Drug/Phase Indicator ⁴	Phrase	S ND=NEW DRUG
—	NO	Hardcopy Reference Number		
PA=	PA	Patent Assignee ²	Phrase	S PA=TAKEDA
PD=	PD	Publication Date	Phrase	S PD=921123
PY=	PY	Publication Year	Phrase	S PY=1992

ADDITIONAL INDEXES (cont'd)

SEARCH PREFIX	DISPLAY CODE	FIELD NAME	INDEXING	SELECT EXAMPLES
RG=	CI	Region of Licensee/Licensors ⁹	Phrase	S RG=FRANCE/LI
RG=	RG	Region of Originator ^{6,9}	Phrase	S RG=JAPAN/LO
RL=	RL	Company Relationship	Word & Phrase	S RL=LICENSOR S RL=CO-DEVELOPER
RN=	RN	CAS(R) Registry Number	Phrase	S RN=103577-45-3
RT=	RT	Record Type	Phrase	S RT=IMAGE
SN=	SN	Stage Number of Highest Development	Phrase	S SN=80
—	SO	Substance Origin ²		
ST=	ST	Status, Country, and Indication ²	Phrase	S ST=MARKETED UK BACTERIAL?
TC=	TC	Therapeutic Class Code ²	Phrase	S TC=A2
TN=	NA	Brand Name ²	Phrase	S TN=TAKEPRON
UD=	—	Update	Phrase	S UD=9999
—	UL	Non-Licensing Country		

¹² MC represents a molecular code for each drug entry in all IMS databases.

¹⁴ The graphic structure can be displayed and edited using DialogLink 5.

¹³ Also searchable as /DE.

SPECIAL FEATURES

For command descriptions, enter HELP LIMIT, HELP SORT, HELP RANK, HELP MAP online.

LIMIT	/AVAIL -- Licensing Available ¹⁰ /NEWDRUG -- New Drug /NEWS -- Drug News Records /PROFILE -- Drug Profile Records /YYYY -- Publication Year	S S7/AVAIL S S4/NEWDRUG S S5/NEWS S S6/PROFILE S S2/1992
SORT	CO, NA, PD, PY, SN, TI	SORT S13/ALL/PY,D PRINT S5/1-24/TI
RANK	All phrase- and numeric-indexed fields in the Additional Indexes can be ranked.	RANK CO RANK CN S4
MAP	MC, NA, RN	MAP RN TEMP S1

PREDEFINED FORMAT OPTIONS

NO.	DIALOGWEB FORMAT	RECORD CONTENT
DRUG PROFILE RECORDS		
1	--	DIALOG Accession Number
2	--	Full Record except Text, Commercial/Scientific/Patent Summary, Development Status/History
3	Medium	Full Record except Text, Commercial/Scientific/Patent Summary, Development Status/History
4	--	Journal Name and Publication Date
5	--	Full Record
6	Free	Drug Name and Publication Date
7	Long	Full Record except Development History, and Estimated Launch Country/Date
8	Short	Drug Name, Journal Name, and Publication Date
9	--	Full Record
12	--	Full Record (except Text, Commercial/Scientific/Patent Summary, Development Status/History) plus Image
18	--	Drug Name, Journal Name, and Publication Date plus Image
19	Full	Full Record including Image
K	--	KWIC (Key Word In Context) displays a window of text; may be used alone or with other formats
DRUG NEWS RECORDS		
1	--	DIALOG Accession Number
2	--	Title, Journal Name, Publication Date, and Molecular Code
3	--	Title, Journal Name, Publication Date, and Molecular Code
4	--	Full Record except Molecular Code
5	--	Full Record
6	--	Title and Publication Date
7	--	Full Record except Descriptors
8	--	Title, Journal Name, and Publication Date
9	--	Full Record
K	--	KWIC (Key Word In Context) displays a window of text; may be used alone or with other formats

OTHER OUTPUT OPTIONS

For an explanation, enter HELP TYPE, HELP UDF, HELP TAG online.

USER DEFINED FORMATS	Display codes listed in the Search Options tables can be used to customize output.	TYPE S3/TI,PD/1-5
TAG	Output can be displayed with tags identifying each display field.	TYPE S2/8/ALL TAG
DIRECT RECORD ACCESS	If the accession number of a specific record is known, it can be used to display the record directly.	TYPE 00612331/5 DISPLAY 00623031/NA,PD PRINT 00618279/9